

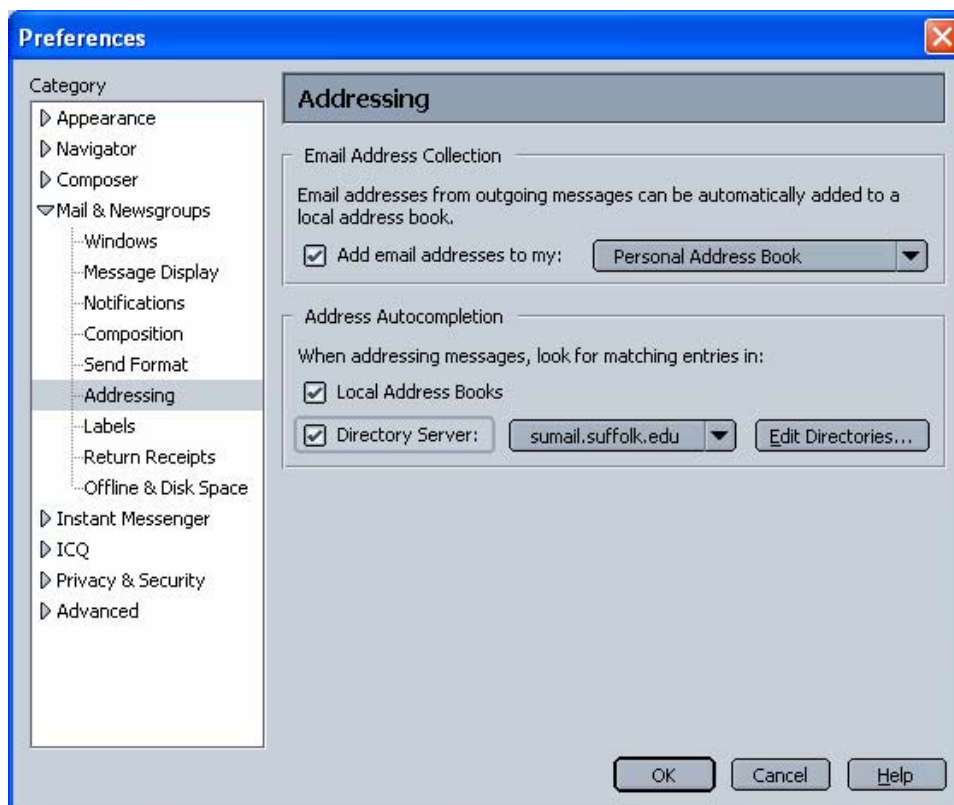
Using LDAP with Netscape 7 for Windows

This document details the configuration specific to using Suffolk's LDAP server, sumail.suffolk.edu, to compose messages in Netscape 7.

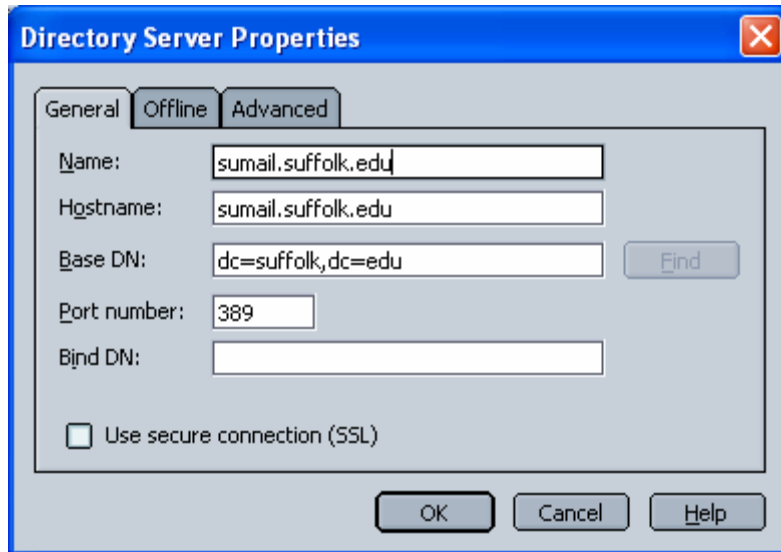
Note: You must have Netscape 6 configured to send and receive e-mail before continuing with the instructions in this document. For help with configuring Netscape 6, please see the documentation at [Configuring Netscape 6 Mail for Windows](#).

Specifying a Directory Server

- Click on the Window menu and select Address Book. This will open Netscape's Address Book program.
- In the Address Book window, Click on the Edit menu, and choose Preferences.
- Place a check mark in the box next to Directory Server. Then Click Edit Directories.



- Click on Add button. This will open the Directory Server Properties window.
- In the Name field, enter `sumail.suffolk.edu`
- In the Hostname field, enter `sumail.suffolk.edu`
- In the Base DN field, enter `dc=suffolk,dc=edu`
- Click on OK to close the Directory Server Properties window.
- Click on OK in the LDAP Directory Servers window, and click on OK to close the Mail & Newsgroups Account Settings window.



Using LDAP to Compose Messages

Netscape 7 uses an LDAP directory to suggest e-mail addresses through auto completion. To use the LDAP directory when composing an e-mail message:

- Click on the File menu and select New message
- Type in the beginning portion a person's first name, last name, or e-mail address in the To: or Cc: field. Matching entries found on LDAP will appear below the field.
- Select the desired match by clicking on it, or you can highlight the entry with the arrow keys and press Enter.